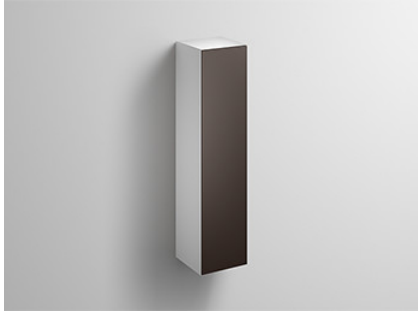


A³form

Technical data sheet



Cupboard - Folio

HS.FO1250.R

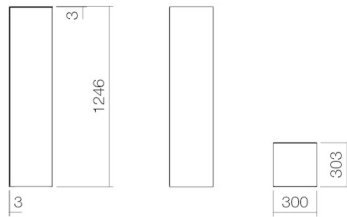
Article number: 6323690013

Design partner: Alape

Features

Description	HS.FO1250.R
Article number	6323690013
Surface	Glazed steel Schattenerde
Dimensions	300 x 1250 x 300
Net weight	33,50
Accessoires	
Tap fitting information	

Tap fittings with a vertical outlet and aerator provide the optimum flow of water onto the surface below (angle of impact: 90°).



Text for invitation to tender

Cupboard, rectangular, w/h/d 300/1246/303mm, one door, handle-free with push-to-open, door stop on the right, width with door open 355 mm (opening angle 105°), includes fixing set, glazed side bracket on the left, white, front and right side MDF, silk-matt paint, shadow earth, 4 glass shelves, without dowels (to be adjusted to constructional situation)

Brand: Alape

Model: HS.FO1250.R
