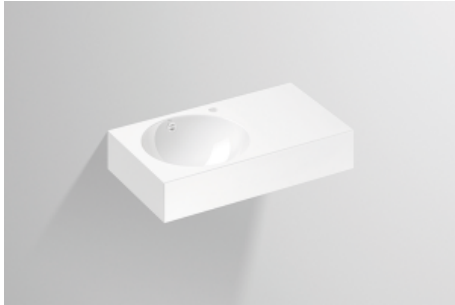


## Technical factsheet

---



**Washstand**  
**WT.MC800H.L**  
**MC series**

Item Number: 4231000000

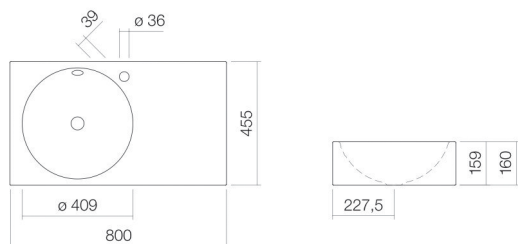
## Characteristics

---

Model description	WT.MC800H.L
Item Number	4231000000
Material basin	glazed steel white
Coating	ProShield
Dimensions	w/h/d 800 mm/160 mm/455 mm
Form	rectangular
Hole	with one tap hole
Overflow	with overflow
Basin mould	round left Bowl depth 409 mm
Net weight	10,3 kg
Mounting type	wall-hanging

**Fittings information** Impact area 129 mm - 189 mm  
from middle of tap hole

Optimal impact on the basin mould with fittings that have a vertical outlet (90 ° angle of impact) and a built-in aerator.



## Flow rate chart

## Product/tender specifications

**Washstand**  
**WT.MC800H.L**  
**MC series**  
Item Number:

4231000000

### Text

Washstand, wall-hanging, rectangular, w/h/d 800/160/455 mm, round, left, 409, 159, 409, glazed steel, white, ProShield, with one tap hole, right next to mould, with overflow, fixing set, overflow set

---