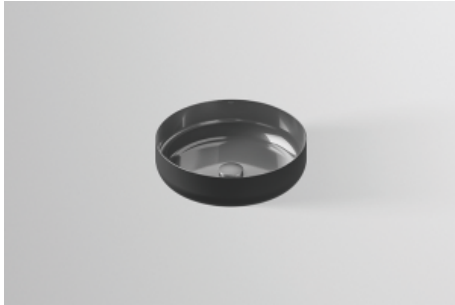


## Technical factsheet

---



**Sit-on basin**  
**AB.SO450.1**  
**SO series (Sondo)**  
Item Number:

3503000190

## Characteristics

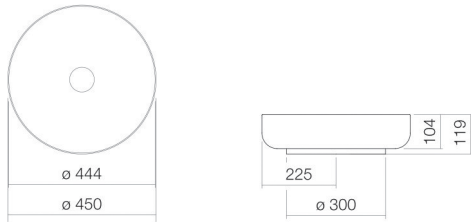
---

Model description	AB.SO450.1
Item Number	3503000190
Material basin	glazed steel dark iron
Color	metallic
Dimensions	w/h/d 450 mm/119 mm/450 mm
Form	round
Hole	without tap hole
Overflow	without overflow
Net weight	7 kg

### Fittings information

Impact area 60 mm - 170 mm  
from rear edge of basin

Optimal impact on the basin mould with fittings that have a vertical outlet (90 ° angle of impact) and a built-in aerator.



## Flow rate chart

## Product/tender specifications

Sit-on basin

AB.SO450.1

SO series (Sondo)

Item Number:

3503000190

Text

Sit-on basin, round, Ø 450 mm, height 119 mm, glazed steel, dark iron, metallic, without tap hole, without overflow, included fixing set, drain valve, valve cap, metallic dark iron glazed, Ø 74 mm, black spacer ring

---