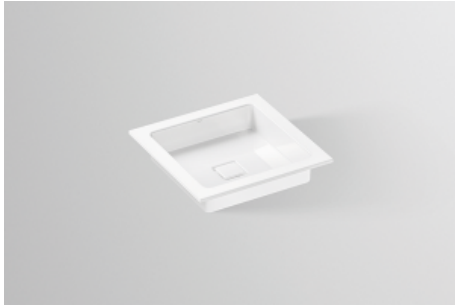


## Technical factsheet

---



### Built-in basin

**EB.Q450**

**Q series**

Item Number: 2302000000

## Characteristics

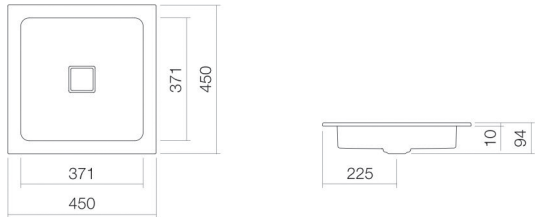
---

Model description	EB.Q450
Item Number	2302000000
Material basin	glazed steel
	white
Coating	ProShield
Dimensions	w/h/d 450 mm/94 mm/450 mm
Form	square
Hole	without tap hole
Overflow	without overflow
Net weight	4 kg
Mounting type	for installation from above

### Fittings information

Impact area 115 mm - 170 mm  
from rear edge of basin

Optimal impact on the basin mould with fittings that have a vertical outlet (90 ° angle of impact) and a built-in aerator.



## Flow rate chart

## Product/tender specifications

### Built-in basin

**EB.Q450**

**Q series**

Item Number:

2302000000

### Text

Built-in basin, for installation from above, square, w/h/d 450/94/450 mm, glazed steel, white, ProShield, without tap hole, without overflow, included fixing set, drain valve, valve cap, white glazed, w/d 68/mm

---