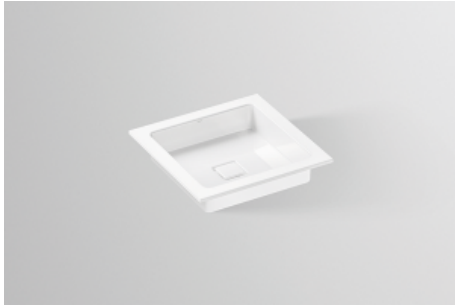


Technical factsheet



Built-in basin

EB.Q450

Q series

Item Number: 2302000000

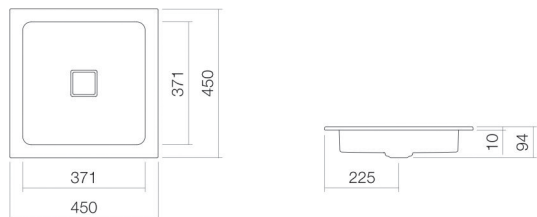
Characteristics

Model description	EB.Q450
Item Number	2302000000
Material basin	glazed steel white
Coating	ProShield
Dimensions	w/h/d 450 mm/94 mm/450 mm
Form	square
Hole	without tap hole
Overflow	without overflow
Net weight	4 kg
Mounting type	for installation from above

Fittings information

Impact area 115 mm - 170 mm
from rear edge of basin

Optimal impact on the basin mould with fittings that have a vertical outlet (90 ° angle of impact) and a built-in aerator.



Flow rate chart

Product/tender specifications

Built-in basin

EB.Q450

Q series

Item Number:

2302000000

Text

Built-in basin, for installation from above, square, w/h/d 450/94/450 mm, glazed steel, white, ProShield, without tap hole, without overflow, included fixing set, drain valve, valve cap, white glazed, w/d 68/mm
